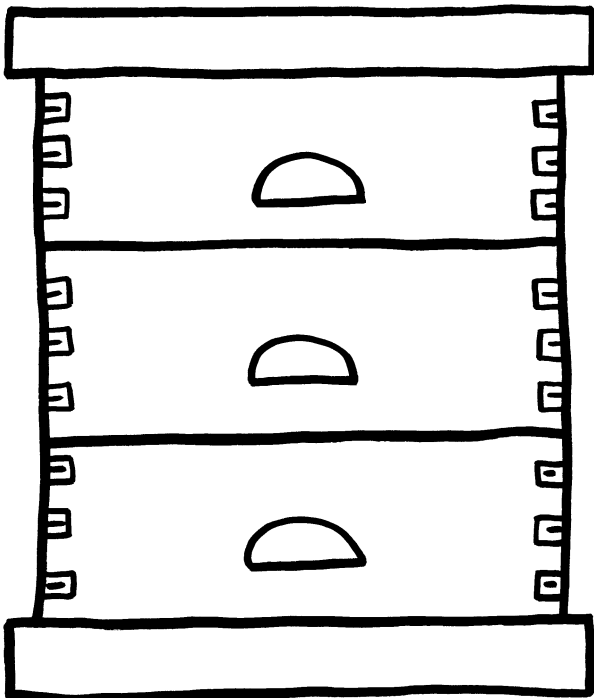


Bee Houses

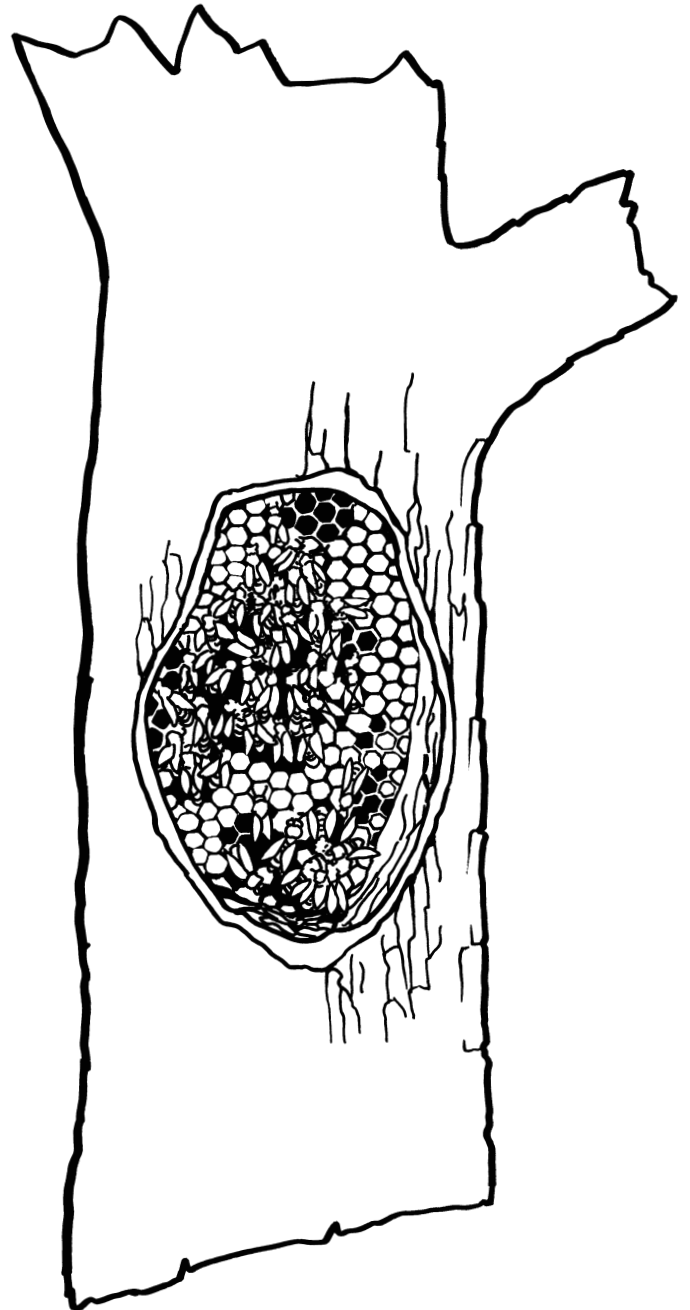
Color the 3 types of beehives below.



Traditionally, beekeepers used skeps, old-fashioned hives that were made of straw.



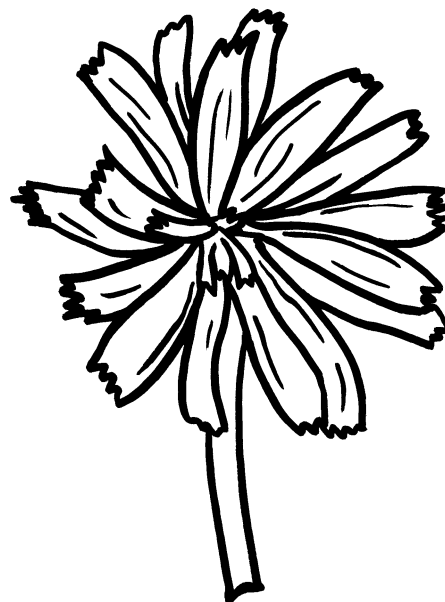
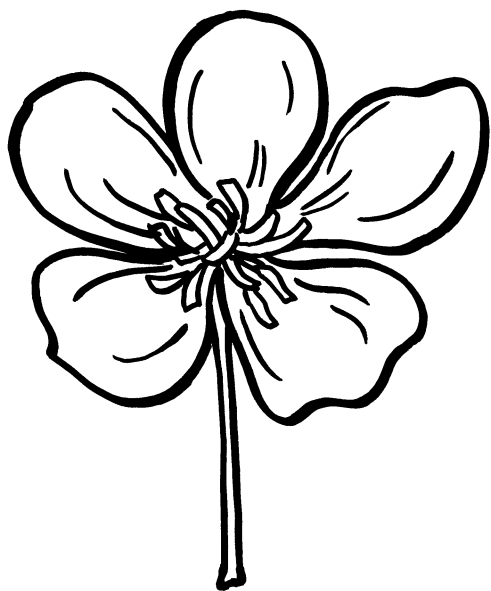
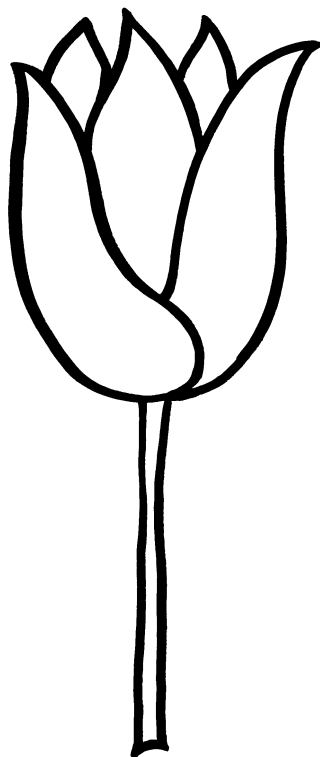
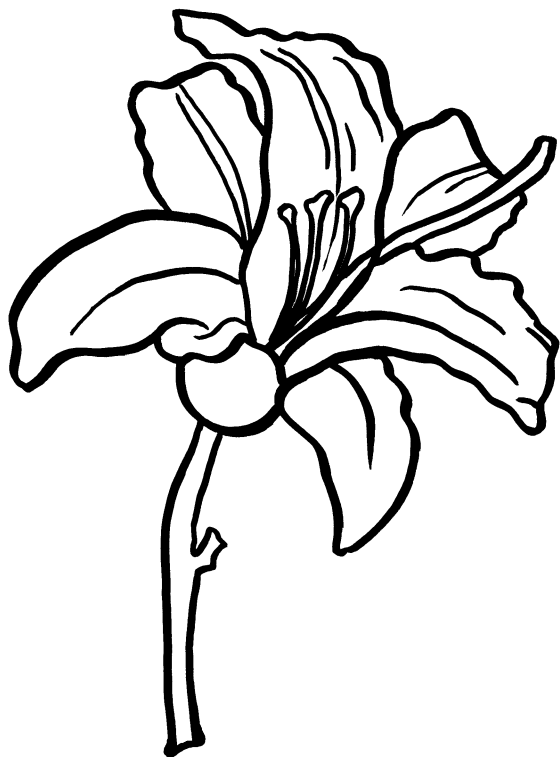
A modern beekeeper's hive is made of wood and is divided into layers.



In the wild, bees build their hives in hollow trees.

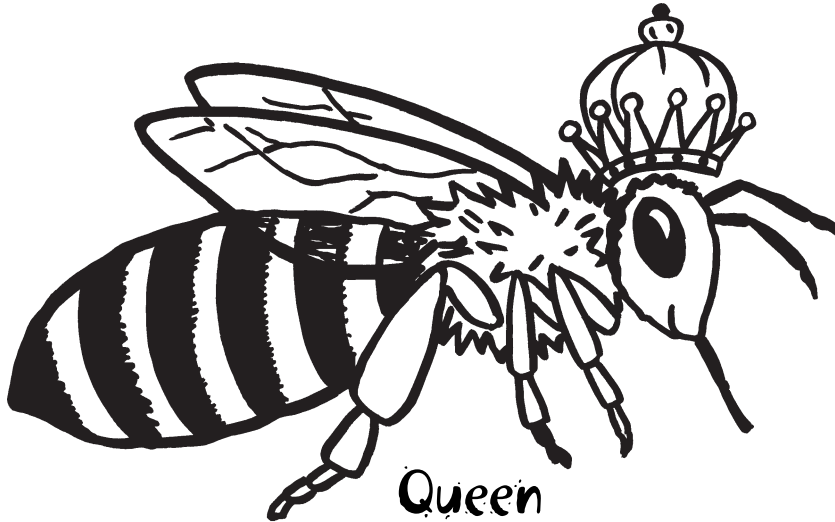
What Bees See

Bees are attracted most to flowers that are blue, purple, and yellow. Color the flowers below using the bee's favorite colors.



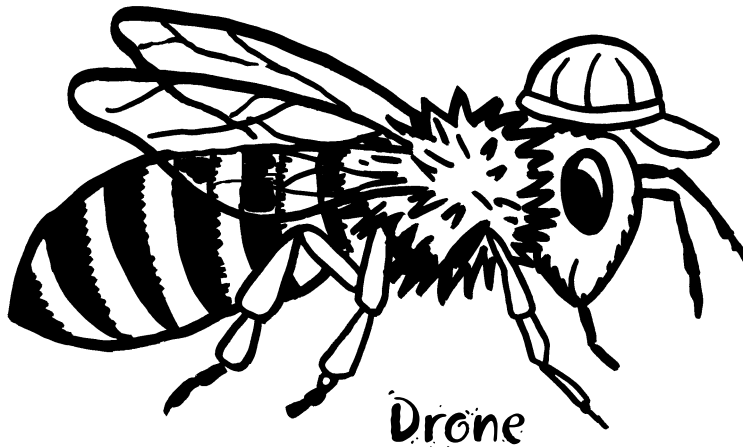
Busy as a Bee

Color the three types of honeybees.



The Queen's Job

- Lays eggs, up to 1,500 in one day
- Keeps the worker bees calm



The Drone's Job

- Mates with the queen
- Keeps the worker bees happy



The Worker's Job

- Builds the hive
- Cleans and guards the hive
- Takes care of the queen
- Feeds all of the bees
- Cares for the young bees
- Collects pollen and nectar from flowers
- Makes honey for food